



STOPPLE® Fittings

ASME B31.8 - Sizes 4- through 12-inch & 16-inch



T.D. Williamson, Inc.

Bulletin No: 1100.006.01

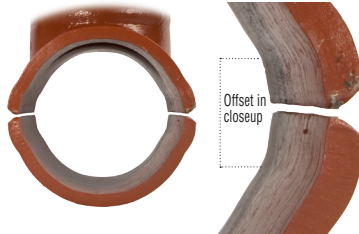
Date: November 2008

Cross Indexing No: n/a

Supersedes: October 2007



■ **STOPPLE® Fitting**
LOCK-O-RING® Plug, Blind flange,
studs, nuts and gasket sold separately



New fittings incorporate a designed and manufactured offset allowing the placement of back-up strips

Description

STOPPLE® Fittings are 4- through 12-inch & 16-inch full-branch split tees designed for use with the TDW STOPPLE plugging system. They meet B31.8 specifications for gas transmission and distribution piping systems. STOPPLE Fittings are furnished with LOCK-O-RING® Flanges to accept a LOCK-O-RING Completion Plug, permitting removal of the tapping valve after work is completed.

Features

Flange-to-sleeve weld joints and sleeves are designed to meet pressure and reinforcement requirements of ASME codes, and are available in Class 150, 300 and 600. Other ASME Class ratings available upon request.

Fittings are manufactured with a controlled carbon equivalent to make welding easier in harsh environments. Back-up strips are provided for all fittings.

All pressure-containing welds on the fittings have undergone X-ray inspection per ASME requirements.

Fitting sleeves are an extruded type design. They are manufactured from a pressure-vessel quality, normalized, killed carbon steel plate with hardness below Rc22.

The Charpy impact value of the sleeves at -50°F is 15 ft-lbs average with 12 ft-lbs minimum.

Options

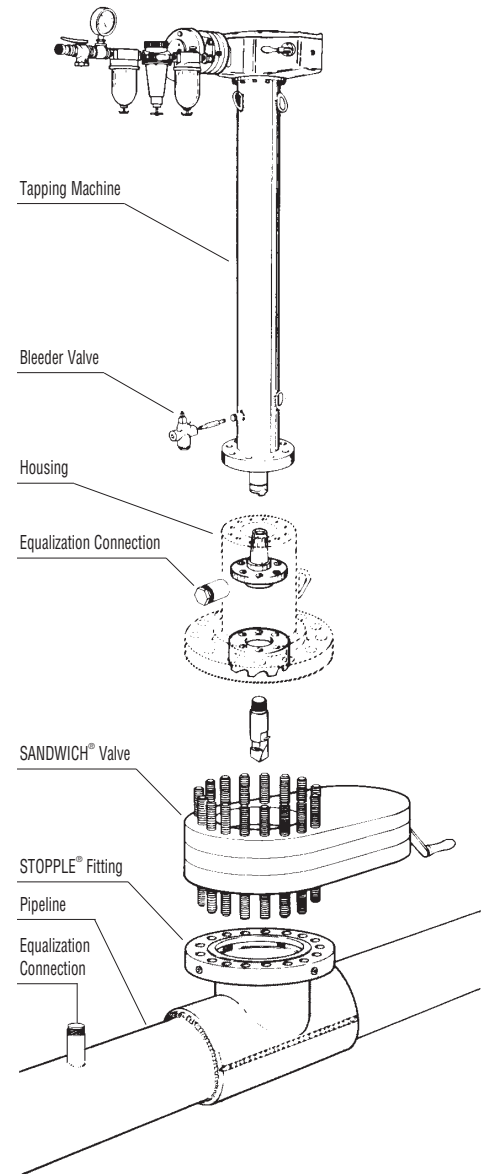
- **Rapid delivery:** If the desired fitting meets standard specifications, it can be shipped from stock or within two weeks in most cases.
- **Choice of flanges.**
- **Available also to ASME B31.3 and B31.4 specifications**

Use the grid inside to develop the part number for the STOPPLE fitting of your choice*

Contact the factory for information concerning ordering of split sleeves (tees).

*Please confirm your choice with a Factory Representative

Typical Tapping Setup For Plugging Operation



ISO 9001 Certified

Toll Free

1-888-TDWmSon (839-6766)

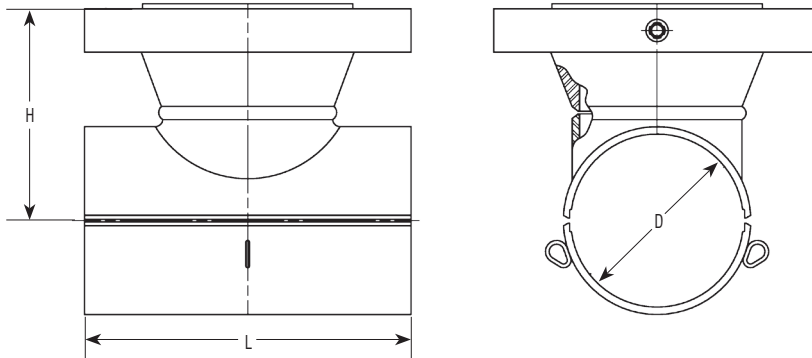


STOPPLE® Fittings - ASME B31.8

36 - 1045 - XXXX - XX

Example

36-1045-0430-11 is a STOPPLE® Fitting with 4" (run) x 4" (branch), with an RF standard weight, standard material flange, BUNA-N o-ring, class 300, and A 537 CL. 1 TDW Std. sleeve material with back-up strips.



STOPPLE® Fitting Size

Inches (Nom.)	Dim. H (Inches)			Dim. L Inches	Dim D Inches
	Class 150	Class 300	Class 600		
04	7.015	7.015	7.266	10.75	4.656
06	8.828	8.828	9.078	14.00	6.781
08	10.156	10.156	10.406	16.50	8.812
10	10.218	11.218	12.844	20.00	10.938
12	12.406	12.906	13.922	22.00	12.938
16	16.172	16.172	16.546	30.00	16.218

STOPPLE® Fitting ASME Class

Part Number	Option
15	150 LB
30	300 LB
60	600 LB

Flange and O-Ring Material

Option	Flange/O-Ring Material	O-Ring Temp. Ratings
1X	A105 w/ Buna-N O-Rings	212° F
2X	A694 F46 w/ Buna-N O-Rings (See Note)	
3X	A105 w/ NEOPRENE O-Rings	225° F
4X	A694 F46 w/ NEOPRENE O-Rings (See Note)	
5X	A105 w/ VITON O-Rings	400° F
6X	A694 F46 w/ VITON O-Rings (See Note)	
7X	A105 w/ EPDM O-Rings	250° F / 500° F Steam
8X	A694 F46 w/ EPDM O-Rings (See Note)	

Note: Only 16-inch flange is available in A694 F46.

Viton® is a registered trademarks of DuPont Performance Elastomers LLC Ltd

Sleeve Material

Option	Sleeve Material
X1	A537 CL1
X2	A516 GR 70

Fitting Weights

Size Inches (Nom.)	Weight (lbs.)		
	Class 150	Class 300	Class 600
04	55	60	65
06	90	100	105
08	135	140	160
10	190	190	280
12	300	300	380
16	580	600	700



STOPPLE® Fittings - ASME B31.8

Maximum Allowable Operating Pressure (in psi) -20°F to 100°F

Class	Size	.72 Design Factor		.6 Design Factor		.5 Design Factor		.4 Design Factor	
		A516 GR 70N	A537 CL 1	A516 GR 70N	A537 CL 1	A516 GR 70N	A537 CL 1	A516 GR 70N	A537 CL 1
150	4	285	285	285	285	285	285	285	285
	6	285	285	285	285	285	285	285	285
	8	285	285	285	285	285	285	285	285
	10	285	285	285	285	285	285	285	285
	12	285	285	285	285	285	285	285	285
	16	285	285	285	285	285	285	285	285
A 105 Flange	4	740	740	740	740	740	740	740	740
	6	740	740	740	740	740	740	650	650
	8	740	740	735	735	615	615	490	490
	10	740	740	740	740	740	740	625	625
	12	740	740	740	740	740	740	615	615
	16	740	740	740	740	740	740	640	640
300	16	740	740	740	740	740	740	650	685
A694 F46 Flange									
A 105 Flange	4	1480	1480	1480	1480	1380	1480	1105	1205
	6	1420	1480	1180	1480	985	1295	785	1035
	8	1130	1480	940	1235	785	1030	625	825
	10	1190	1480	990	1305	825	1085	660	870
	12	1150	1480	955	1230	795	1025	635	820
	16	1170	1480	975	1285	815	1070	650	855
600	16	1170	1480	975	1285	815	1070	650	855
A694 F46 Flange									

Note 1: A694 F46 option is available for 16-inch flange only.

Note 2: 16-inch 150 Lb values are the same for A105 and A694 F46 Flanges

Consult Factory for other pressure and temperature requirements



T.D. Williamson, Inc.

1100.006.01 Pg. 4